

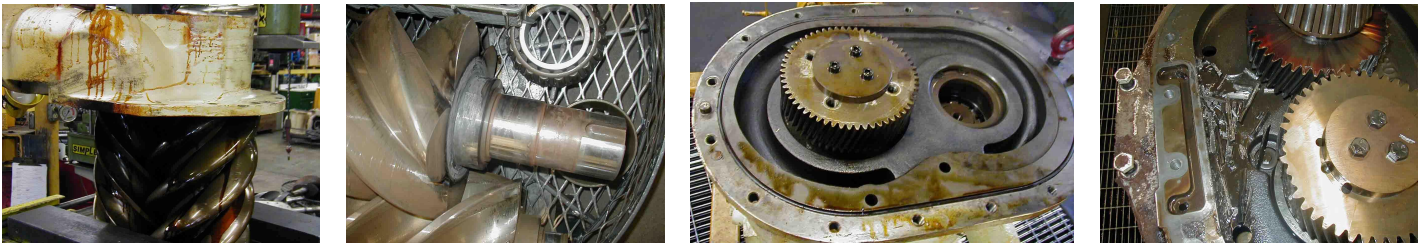


AIR ENGINEERING®
HIGH PERFORMANCE PARTS
S I N C E 1 9 6 2

Phone 800-558-4318 Fax 262-786-5199 E-mail parts@airengineering.com Web www.airengineering.com

AIREND REBUILDING PROCEDURE

Once the airend is received it is unloaded and taken immediately to the disassembly area, which contains a mounting stand, overhead crane and oil pit for collecting waste oil. The job is then assigned a work order number, and a job folder is generated to hold all documents related to disassembly, teardown and dimensional specs. This folder follows the airend through the entire rebuilding process to ensure accurate documentation from start to finish.



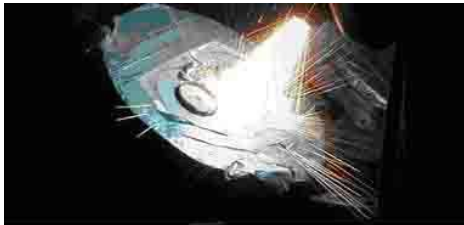
Once the airend is disassembled, all components are checked for wear & all measurements are recorded. Pictures are taken identifying the problem areas.



The disassembled airend is then placed in one of our self-contained cleaning systems. After the airend is completely cleaned & degreased, all parts that require work are brought to different areas of the shop and the repairs begin.

If necessary, the following repairs will be made:

1) The front and rear covers can be metalized using the thermal ARC system & then machined by the Blanchard grinder.

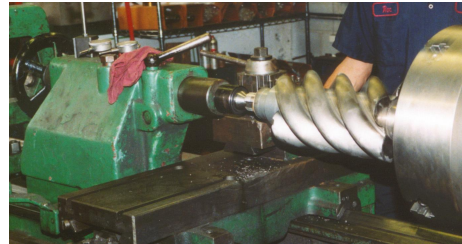
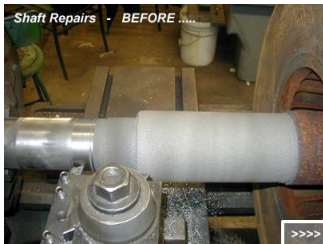


Metalizing

Polished End Plate



2) The rotors can be mounted and turned on a lathe. Bearing journals can be metalized and ground according to specs.



3) The main bore area can plated and bored on a vertical boring mill.



Metalized End Plate

4) Seal strips can be built up and re-cut on our custom jig.



Depending on the extent of the damage, the above work normally takes 1 to 2 days to complete.

All components are then rewashed and taken to the assembly area, where all the bearings, seals, gaskets, and related materials needed to complete the assembly are pulled from inventory.

Before assembly takes place all the dimensions are rechecked including the bearing pockets, bores, and alignments. Both rotors are then checked for proper balance and alignment. The new bearings are measured for proper fit before installing.

The airend is then completely reassembled. After assembly the airend is spun unloaded for a final check. To insure that the manufacturers specs are being met, the unit is continually measured and re-checked for accuracy during the entire rebuilding process.

Upon completion, all open ports are plugged with plastic caps and the inlet is sealed shut. The airend is now ready to be skid mounted and painted the original O.E.M. color.



As units enter the shipping area, all necessary shipping documents and start-up procedures are attached to the unit, and trucking details are arranged.

This whole process normally takes 5 to 7 working days, depending on the size of the airend and the degree of damage. We have setup our shop so the work flows through on an orderly path to insure that all our inspection steps and quality controls are adhered to.

All rebuilds are backed by our standard one-year, 8,000 hour warranty or our extended two-year, 16,000 hour warranty. See the airend warranty sheet for details.